

# PEOPLE'S URBAN HISTORY

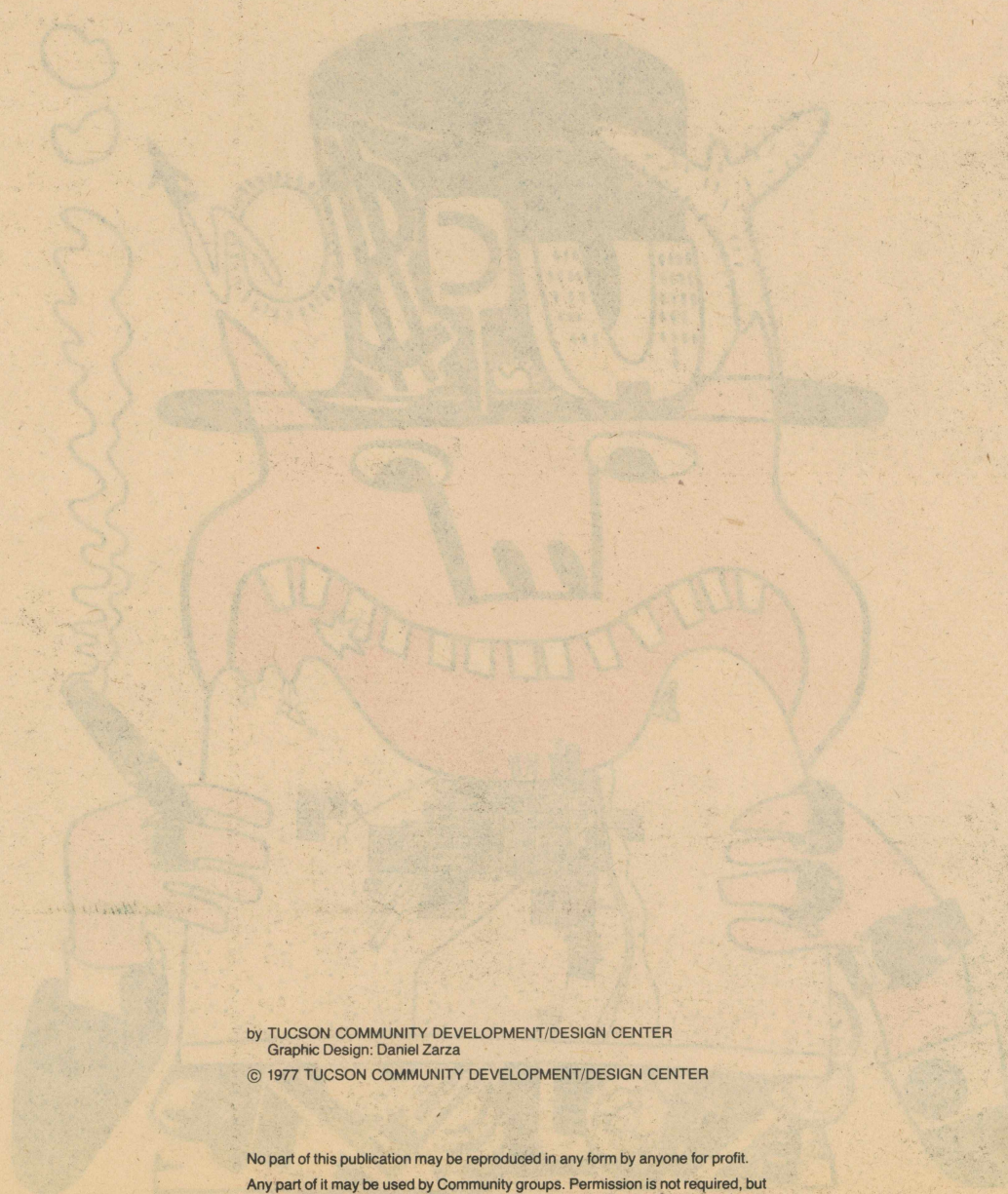
OF





TUCSON IS A PRODUCT OF HISTORY.  
HISTORY IS THE WORK OF PEOPLE.  
ACTION WHICH CREATES HISTORY IS DETERMINED BY THEIR WILL.  
THIS WILL IS THE EXPRESSION OF THEIR IDEAS.  
THESE IDEAS ARE THE REFLECTION OF THE SOCIAL CONDITIONS IN WHICH THEY LIVE.  
IT IS THESE SOCIAL CONDITIONS WHICH DETERMINE CLASSES AND THEIR STRUGGLES.  
CLASSES ARE THEMSELVES DETERMINED BY ECONOMIC CONDITIONS.

PEOPLE'S  
HISTORY



by TUCSON COMMUNITY DEVELOPMENT/DESIGN CENTER  
Graphic Design: Daniel Zarza  
© 1977 TUCSON COMMUNITY DEVELOPMENT/DESIGN CENTER

No part of this publication may be reproduced in any form by anyone for profit.  
Any part of it may be used by Community groups. Permission is not required, but  
credit will be given to Tucson Community Development/Design Center, and a copy  
of anything based on this material will be sent to us.



IN THE BEGINNING TUCSON WAS COVERED WITH DARKNESS. THERE WAS NO SUN, NO DAYS. THE NIGHTS WERE PERPETUAL WITHOUT STARS OR MOON.

AS TIME PASSED TUCSON BECAME COVERED WITH SEAWATER.

THE MOUNTAINS AND VOLCANOS WERE BORN...

THEY WERE COVERED WITH ICE WITH THE COMING OF THE GLACIERS.

WHEN THE ICE BEGAN TO MELT THE CONTINENTS SEPARATED AND THE OCEANS REGAINED MOST OF THE LAND. HUMANS CAME TO AMERICA 35,000 YEARS BEFORE CHRIST. MANY STAYED TO HUNT OR PICK FRUIT IN THE TUCSON VALLEY, WHERE THERE WAS AN ABUNDANCE OF WATER, LARGE TREES AND GRASSLAND. OTHERS CONTINUED SOUTH WHERE THEY LATER ESTABLISHED THE GREAT CIVILIZATION OF THE MAYAS, AZTECS AND INCAS.

THEY WERE COVERED WITH ICE WITH THE COMING OF THE GLACIERS.

THIS WAS NOT A DESERT 7500 YEARS AGO. BUT A GREAT DROUGHT THAT LASTED 3000 YEARS CONVERTED IT TO ITS PRESENT STATE.

IT'S VERY HOT....  
...AND DRY!  
WE MUST ADAPT OUR LIFE TO CHANGE

GEOLOGICALLY SPEAKING THE DESERT IS A VERY YOUNG PHENOMENON. THE PLANTS AND ANIMALS THAT THRIVED IN LUSH AREAS HAD TO ADAPT OR PERISH AS THESE AREAS BECAME DESERTS. THE ADAPTATION WAS MORE STRATEGIC THAN PHYSICAL. TO SURVIVE IN THE DESERT ONE HAD TO BE CLEVER. PLANTS ELIMINATED THEIR LEAVES, THEIR STEMS WERE CONVERTED TO WATER RESERVOIRS, DEVELOPED DEEPER ROOTS, FLOWERED AS LITTLE AS POSSIBLE USING ITS SEEDS AS A SHELTER. ANIMALS BECAME NOCTURNAL, LIVED UNDERGROUND AND DEVELOPED PANTING TO CONSERVE WATER.

EVERYBODY THOUGHT OF SOMETHING INCLUDING THE ANIMALS CALLED HUMANS: INDIANS, SPANIARDS AND MEXICANS. EVERYBODY EXCEPT SOME RECENT DWELLERS WHO.....

EVERYBODY THOUGHT OF SOMETHING INCLUDING THE ANIMALS CALLED HUMANS: INDIANS, SPANIARDS AND MEXICANS. EVERYBODY EXCEPT SOME RECENT DWELLERS WHO.....



ONE OF THE EARLIEST INHABITANTS OF THE SANTA CRUZ VALLEY RIVER WERE THE HOHOKAMS. THEY WERE A GREAT CIVILIZATION, NOT SAVAGES AS THE HISTORY BOOKS HAVE TAUGHT US.

WE LIVED IN THE DESERT WITHOUT DESTROYING IT. WE OWNED THE LAND COLLECTIVELY. FOR OUR IRRIGATION WE BUILT CANALS.

WE CULTIVATED OUR CROPS OF BEANS, SQUASH AND CORN TOGETHER. THESE BASIC STAPLES PROVIDED OUR PEOPLE WITH A COMPLETE DIET.

EXACTLY! CORN BEANS AND SQUASH PROVIDE PROTEINS, HYDROCARBONS AND VITAMINS THAT ARE NECESSARY FOR A COMPLETE AND WELL BALANCED DIET. ALSO BY GROWING THESE THREE CROPS TOGETHER THE SOIL IS NOT DESTROYED, FOR A SOIL REGENERATE CYCLE IS SET UP. THE NITROGENS USED UP BY THE CORN ARE REPLENISHED BY THE NITROGENOUS ROOTS OF THE BEAN PLANT. THE CORN IN TURN HELPS THE BEAN PLANT BY PROVIDING SUPPORT FOR ITS GROWTH AND SHADING THE PLANT. THE SQUASH IN TURN...

**FACT:** MANY OF THE ORIGINALS CANALS BUILT BY THE HOHOKAMS ARE PRESENTLY USED BY THE BIG AGRICULTURE INTERESTS.

OUR ARTISANS... DISCOVERED ACID ETCHING, USING SEA SHELLS AND AN ACID SECRETED FROM THE SAHVAROS.

WE USED WHAT THE DESERT GAVE US FOR OUR WARES. WE WORKED FOR OURSELVES NOT FOR THE TOURIST BUSINESS.

IT'S TRUE! THEY DISCOVERED ETCHING BEFORE WE DID IN EUROPE.

NOWADAYS ALL THESE WARES ARE MADE IN HONG-KONG.

AND AFTER DOING ALL THESE THINGS WE STILL HAD TIME TO PLAY BALL.... AND PARTICIPATE IN OUR MARKETS AND RELIGIOUS OUTINGS. OUR SOCIAL LIFE WAS VERY RICH AND IMPORTANT TO US.

LEISURE TIME TODAY IS VERY OFTEN NO MORE THAN VIOLENT MISEDUCATION AND MANIPULATION IN TV, MOVIES AND NEWSPAPERS MIXED WITH COMMERCIAL ADVERTISING.

THE PAPAGOS AND PIMA INDIANS WERE DESCENDANTS OF THE HOHOKAM. THE FIRST TUCSON (STUK-SON) WAS A SUMMER CAMP WHERE A MOUNTAIN TOUCHES THE SANTA CRUZ RIVER. THE PAPAGOS AN PIMAS CONTINUED TO RESPECT DESERT SURROUNDINGS.

I HAVE HEARD THAT YOU ARE GOING TO PLACE A GIANT "A" ON THE MOUNTAIN.

WHAT ARE YOU CRAZY! WE RESPECT THE SURROUNDINGS. WE HAVE BETTER TASTE THAN THAT.

THEN ONE DAY SOME STRANGERS APPEARED FROM WHERE THE SUN RISES.....

THEY HAD WHITE SKIN, LONG BLACK BEARDS, FOUR LEGS AND ANIMALS THAT ROARED AND BREATHED FIRE.

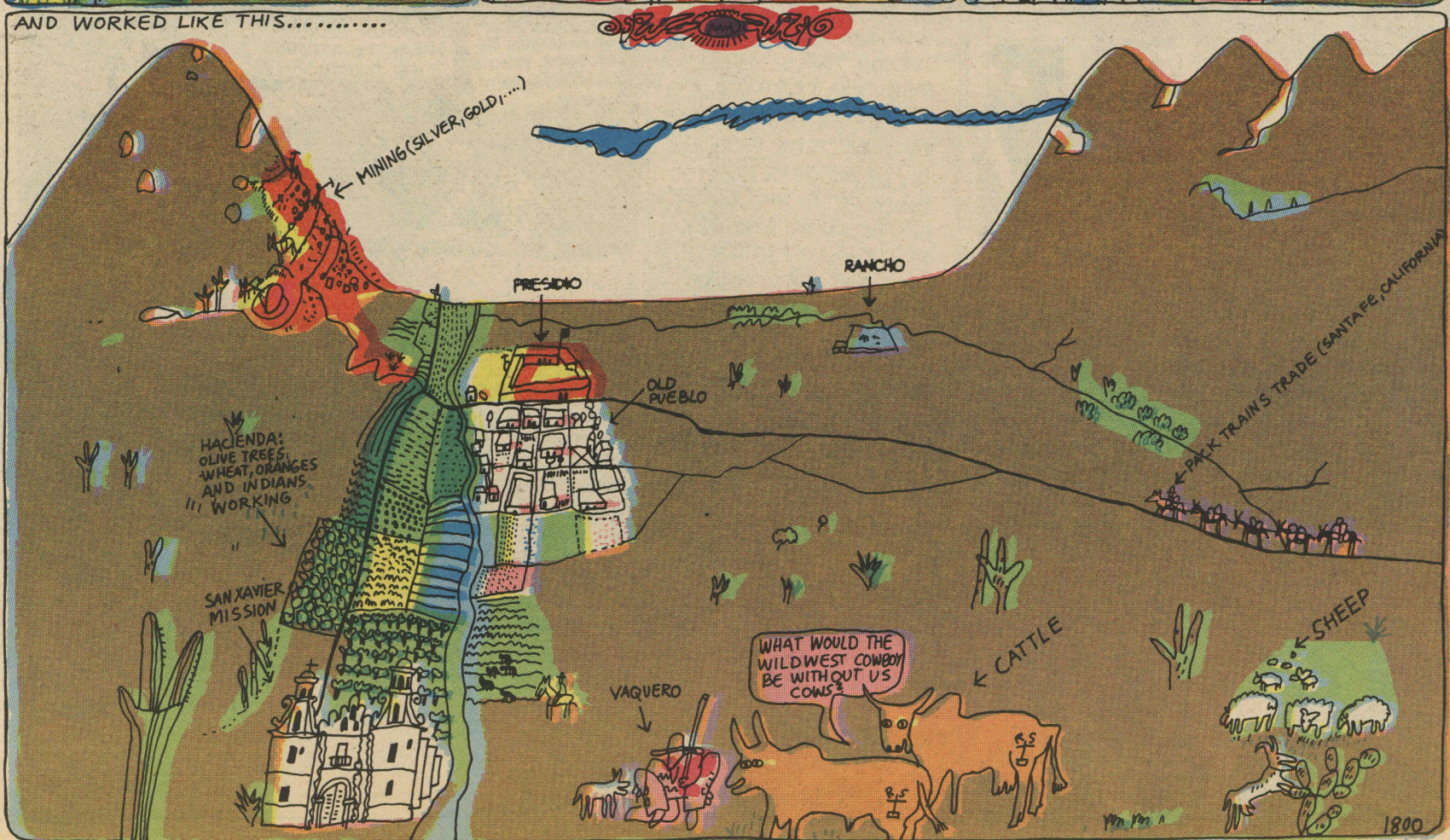
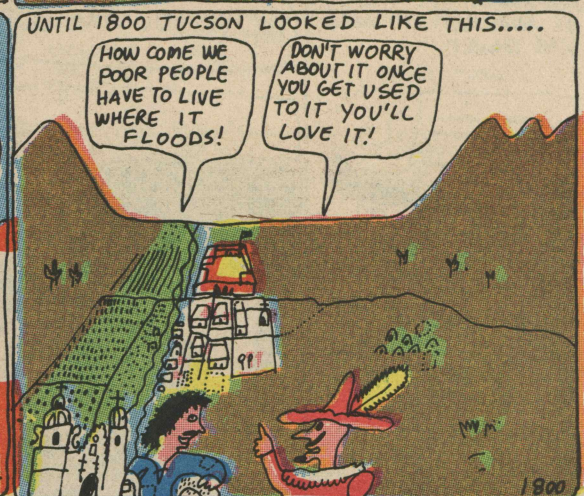
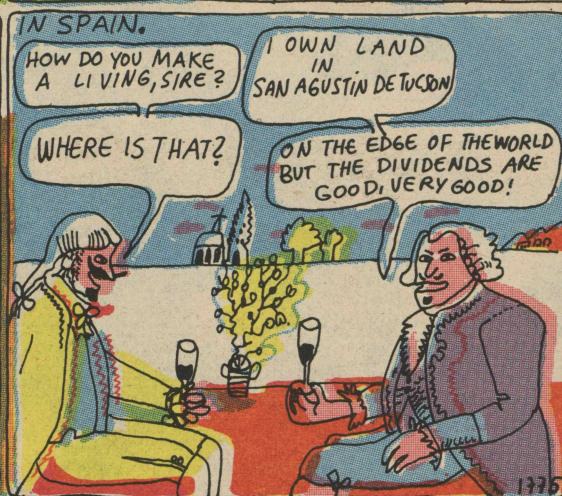
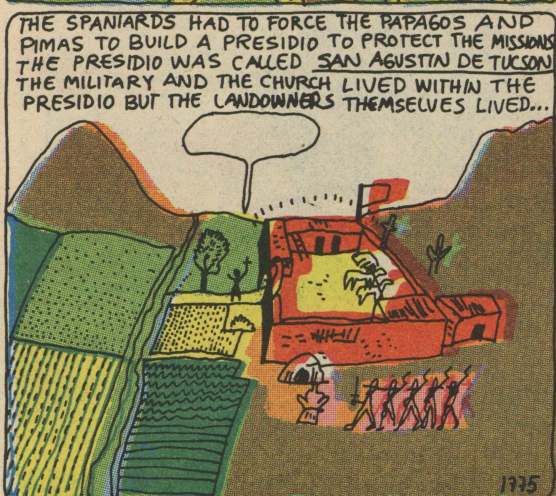
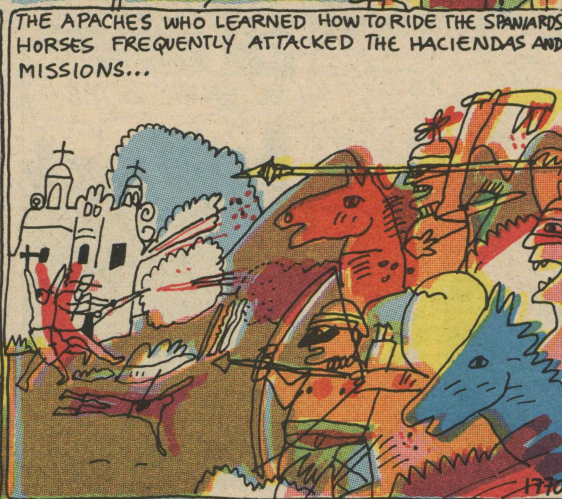
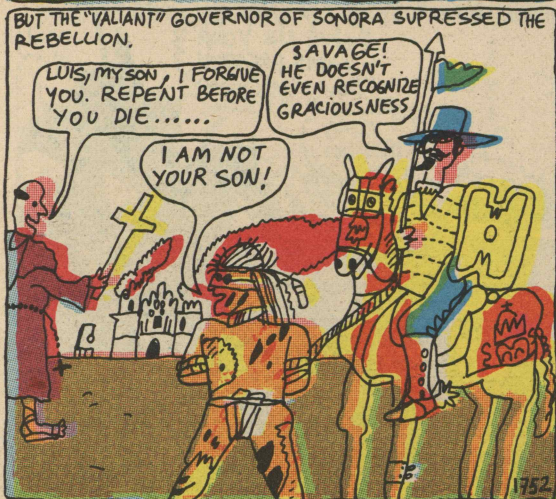
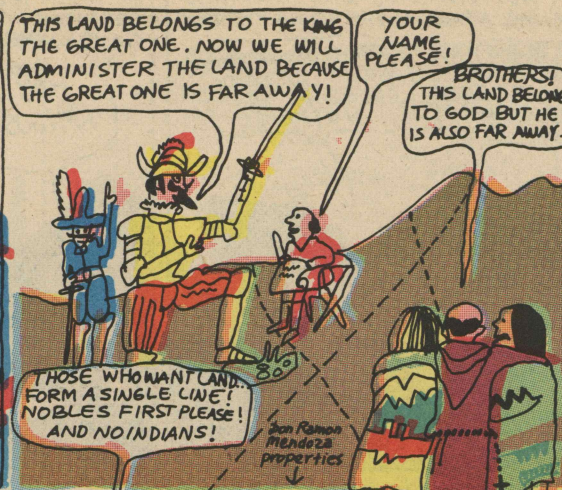
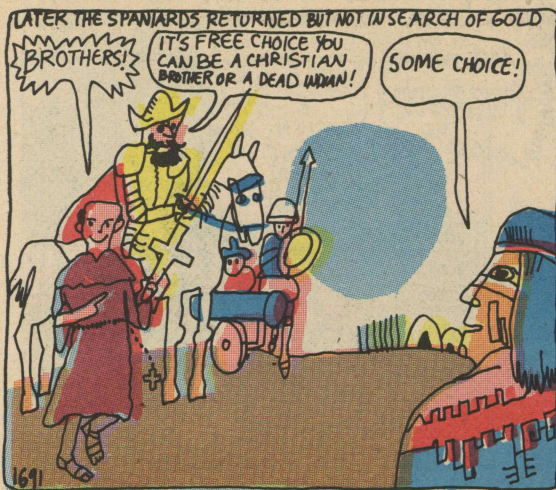
**MONSTERS!**

BROTHERS! I'M A MESSENGER FROM THE GREAT ONE WHO LIVES WHERE THE SUN RISES AND YOU HAVE TO GIVE HIM YOUR WORSHIP AND GOLD!

WE DON'T HAVE GOLD BUT UP NORTH THEY HAVE CITIES WITH LOTS OF GOLD!

AND WITH THIS SIMPLE TRICK THE SPANIARDS WERE SENT SEARCHING FOR THE MYTHICAL "SEVEN CITIES OF CIBOLA".







AND THEN THE 19TH CENTURY CAME...

# 19

IN 1821 MEXICAN INDEPENDENCE WAS DECLARED AND TUCSON BECAME A PART OF THE YOUNG REPUBLIC.

I USED TO EAT BEANS AND WORK FOR THE GLORY OF SPAIN, NOW I EAT BEANS FOR THE GLORY OF MEXICO!

POLITICAL FREEDOM WITHOUT ECONOMIC FREEDOM IS NOTHING!

BETWEEN 1827 AND 1840 ANGLOS MOVED INTO THE MEXICAN TERRITORY WITH PARTIAL PERMISSION OF THE MEXICAN GOVERNMENT.

HEY AMIGOS! TUCSON!

THIS LAND IS RICH!

AND OUR MEXICAN AMERICANS ARE SO EASY TO TRAIN, WILL FOLLOW INSTRUCTIONS AND ARE MORE LOYAL!

AND WHEN THE MEXICAN GOVERNMENT BECAME AWARE OF THEIR ERROR IT WAS ALREADY TOO LATE.

LATER THE UNITED STATES CONGRESS PROVOKED A WAR WITH MEXICO TO SUPPORT THE EXPANSION OF SLAVERY.

THE RAILROAD TYCOONS, THE LAND BARONS, THE MINES AND THE SLAVE OWNERS ENCOURAGED THE COMMON PEOPLE TO GET THEIR BRAINS BLOWN OUT.

IN 1847 THE YOUNG, PROUD AND PROFESSIONAL MARINES INVADDED VERACRUZ AND...

TAKE A LOOK AT THIS NUGGET!

HUM, NOT BAD!

I VOTE IN FAVOR OF DECLARING WAR AGAINST MEXICO!

ME TOO!

SO, DO I!

BE BRAVE BOYS!!

GIVE US YOUR ARMS GREASER!

AND FINALLY THE TREATY OF GUADALUPE-HIDALGO WAS SIGNED.

NOW YOU ARE OURS!

MAKE ROOM WE GOT NEW STARS!

IN THE WAR MEXICO LOST 40% OF THEIR COUNTRY, 525,000 SQUARE MILES AND 75,000 PEOPLE.

BUT STILL THERE WERE PEOPLE WHO WANTED MORE!

MR. PRESIDENT, I HAVE SIGNED THE TREATY OF GUADALUPE!

STUPID! WE COULD HAVE TAKEN MUCH MORE!

AT THE CONCLUSION OF THE MEXICAN-AMERICAN WAR TUCSON WAS STILL MEXICAN TERRITORY. IT ACQUIRED SOME IMPORTANCE BECAUSE OF THE PACK-TRAIN TRADE WHICH CONNECTED SANTA FE TO THE WEST. BUT TUCSON WAS BASICALLY OF LITTLE IMPORTANCE UNTIL THE SOUTHERN-PACIFIC RAILROAD REALIZED THAT THE BEST ROUTE FOR THEIR RAILROAD LAY THROUGH THIS AREA.

SO SORRY BOSS WE HAVE VERY BIG PROBLEM TRACKS CROSS INTO MEXICO!

NO NEED TO WORRY! I WILL SPEAK TO MY MAN IN THE 'WHITE' HOUSE.

A FEW DAYS LATER AT THE 'WHITE' HOUSE...

WHAT ABOUT DECLARING THE TUCSON WAR!

THIS TIME LETS NOT I'D RATHER PAY FOR IT WITH OUR PEOPLES TAXES. LET'S CALL IT 'THE CARDS' PURCHASE!

DON'T YOU THINK 10 MILLION DOLLARS IS TOO MUCH FOR THIS SHITTY DESERT?

MMMM... I DON'T KNOW, I DON'T KNOW...

I DON'T BELIEVE SO!

GOLD/SILVER...

THE CONSTRUCTION OF THE RAILROAD WAS DELAYED BY THE CIVIL WAR BETWEEN THE INDUSTRIAL NORTH AND THE AGRICULTURAL SOUTH. THE RICH PEOPLE OF TUCSON SIDED WITH THE SOUTH. BECAUSE THE NORTH WON THE WAR, THE FIRST TRANS CONTINENTAL RAILROAD CROSSED THE COUNTRY VIA THE NORTHERN ROUTE. BUT BECAUSE THE RAILROAD TYCOONS AND LAND BARONS... MADE SO MUCH MONEY OFF THE RAILROAD, AND THE LAND DEVELOPMENT ASSOCIATED WITH IT, CONSTRUCTION WAS BEGUN ON THE SOUTHERN ROUTE.

RIGHT OF WAY GIVEN TO THE SOUTHERN PACIFIC BY THE GOVERNMENT

WHO WANTS TO BUY A CHOICE LOT!

3 MILES



AND IN TUCSON A FEW CHANGES BEGAN TO SURFACE



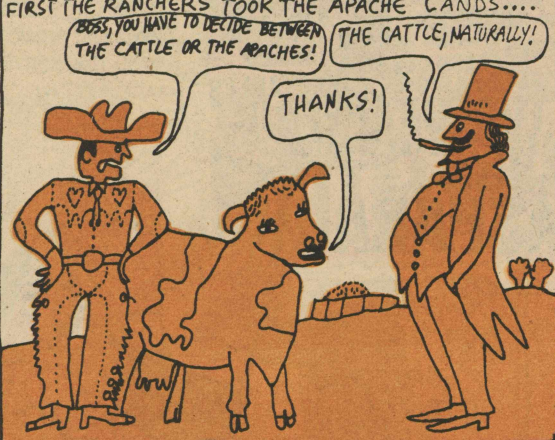
WITH THE COMING OF THE RAILROAD THE ANGLOS ARRIVED IN LARGE NUMBERS... FALSE NEWS OF GOLD DISCOVERIES ALSO BROUGHT THE ANGLO OUT WEST.



UNORGANIZED THE POOR COULD NOT DESTROY THEIR REAL ENEMIES SO INSTEAD THEY WENT ABOUT DESTROYING AND DELUDING THEMSELVES. AND THE RICH EXPLOITED THEM EVEN IN THEIR OWN SELF DESTRUCTION.



GENERALLY SPEAKING THE WILDWEST WAS JUST THE OPPOSITE OF WHAT WE HAVE SEEN IN THE HOLLYWOOD MOVIES. FIRST THE RANCHERS TOOK THE APACHE LANDS...



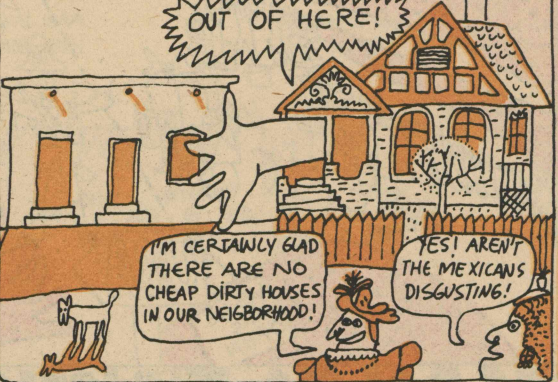
IN ADDITION TO INVALIDATING MEXICAN TITLES THE RICH ACQUIRED MINERAL RIGHTS TO VAST TRACTS OF LAND THROUGH THE 'LEGAL' MEANS OF MINING CLAIMS.



AND THE BONANZA CAME... THE RAILROAD!

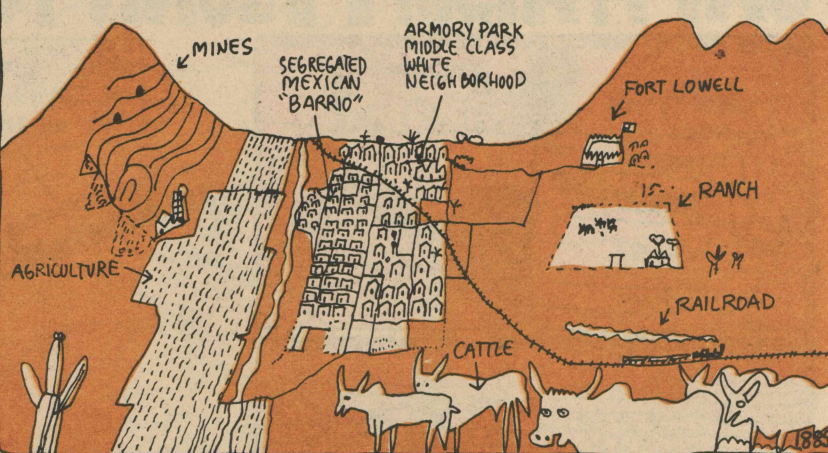


MANY WHO WORKED FOR THE RAILROAD SETTLED IN TUCSON AND MR. POSTON BUILT NEW HOMES FOR THEM ON HIS LAND. THE HOUSES WERE DISTINCTLY ANGLO, OFTEN BUILT OF IMPORTED MATERIALS AND THIS IS HOW THE FIRST ANGLO NEIGHBORHOOD WAS BORN: ARMORY PARK.

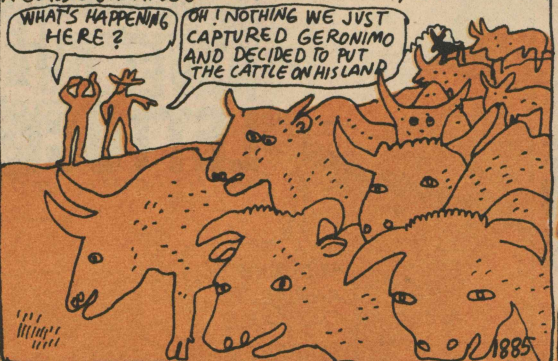


DURING THESE YEARS OPIMUM DEN'S FLOURISHED IN TUCSON'S CHINATOWN. COCKFIGHTS, SUICIDES LYNCHINGS AND KILLINGS WERE EVERY DAY HAPPENINGS IN THE BARRIO LIBRE. CALLED 'LIBRE' BECAUSE YOU COULD DO ANYTHING WITHOUT WORRYING ABOUT THE POLICE WHO WERE BUSY AS USUAL GUARDING THE PROPERTIES OF THE RICH. THIS IS HOW THE MOVEMENT BEGAN AGAINST THE CHINESE (WAR OF THE TUNGS) TO PREPARE THE WAY FOR THE EXPULSION ACT.

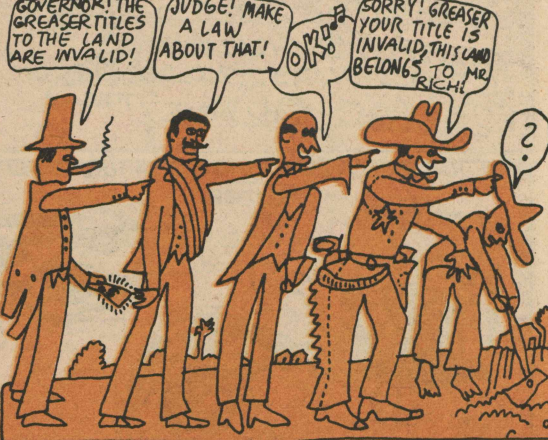
WITH THE COMING OF THE ANGLOS TUCSON BECAME.....



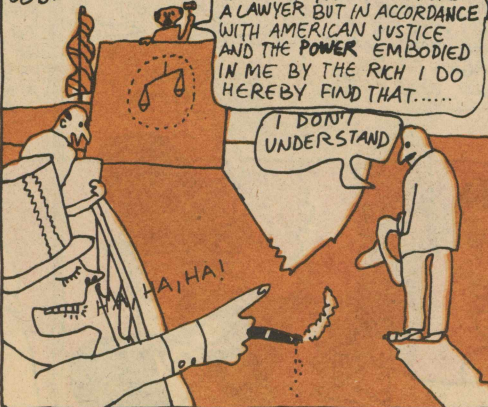
THE RANCHERS BEGAN THE WAR AGAINST THE APACHES BY MASSACRING UNARMED APACHE WOMEN AND CHILDREN AT FORT GRANT (A APACHE CHILDREN SURVIVED). LATER THE ARMY INTERVENED USING BLACK COMPANIES CALLED 'BUFFALO SOLDIERS' BY THE APACHES A CLASSIC EXAMPLE OF USING A POOR MINORITY TO FIGHT ANOTHER.



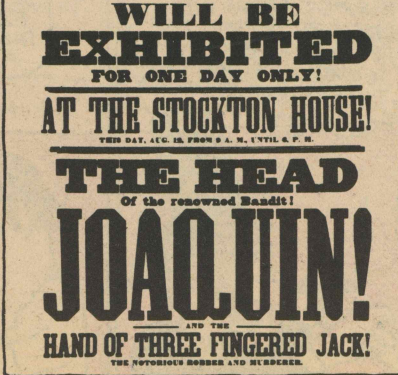
THEN CAME THE MOVEMENT AGAINST THE MEXICANS WHOSE LANDS WERE TAKEN WITH 'NEW ANGLO LAWS'.



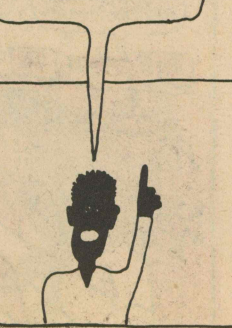
ALSO BY LAW THE COURTS, THE SCHOOLS AND THE 'LEGAL BUSINESS' WAS DONE IN ENGLISH. MEXICAN AND INDIAN CULTURES AND LANGUAGES WERE RIDICULIZED.



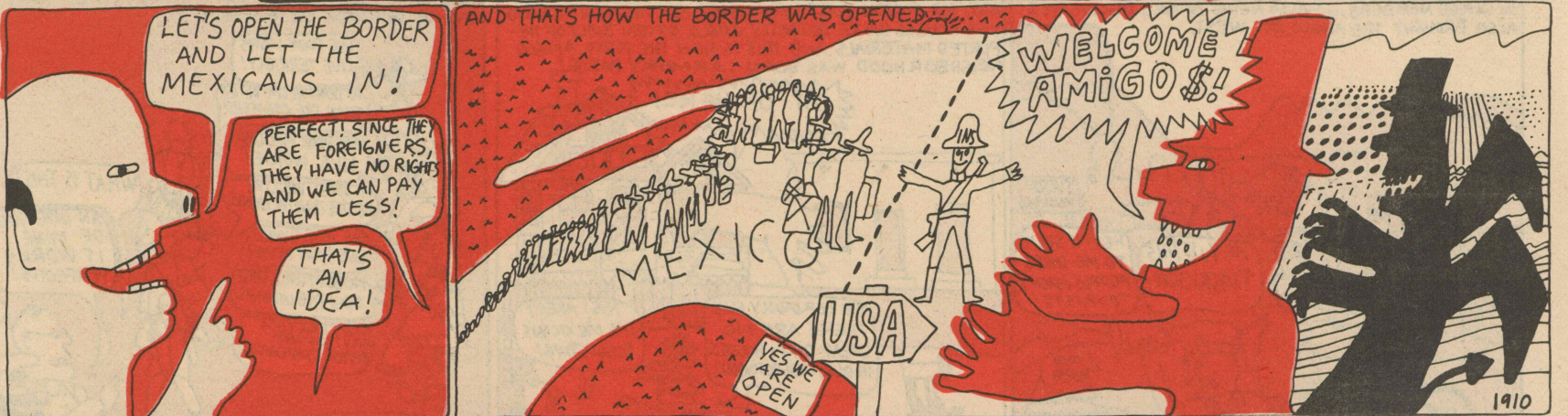
PERSONS WHO RESISTED THESE 'LEGAL' ACTIONS SUCH AS JOAQUIN MURRIETA, CHENO CORTINA, THE GORRAS BLANCAS AND MANY OTHERS WERE CALLED 'OUTLAWS' AND BANDITS...



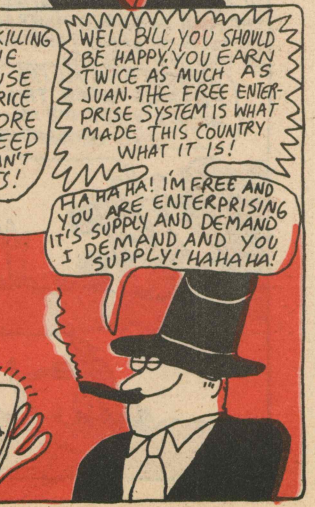
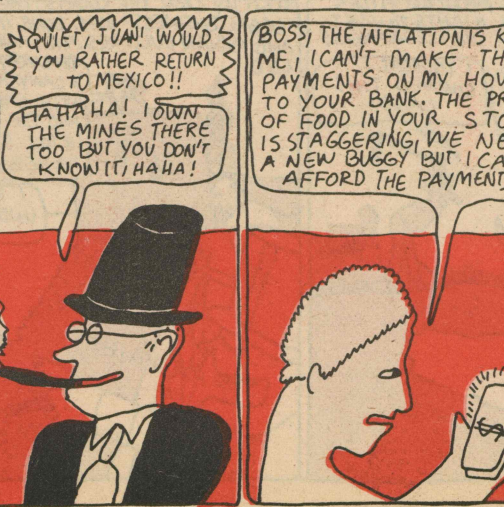
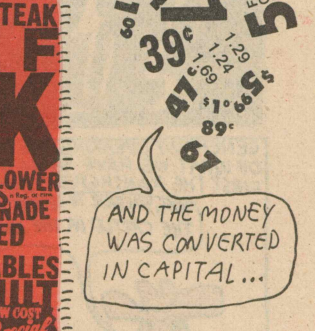
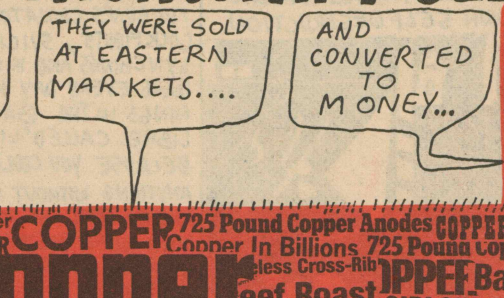
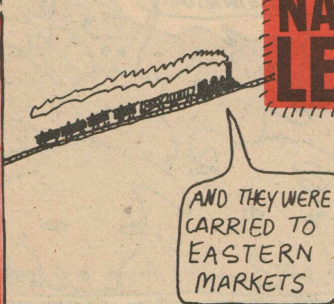
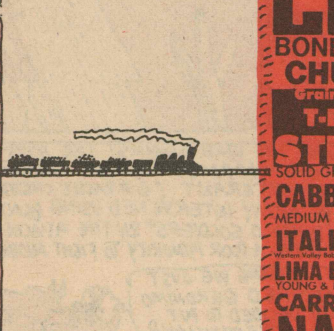
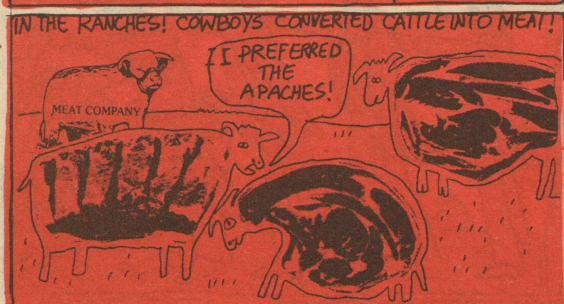
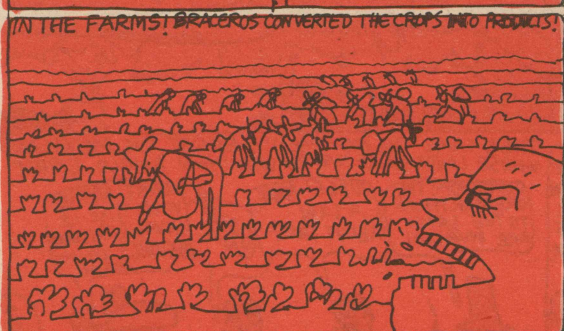
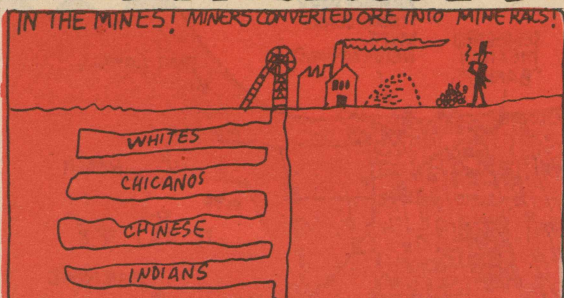
IN AFRICA THIS PROCESS IS CALLED COLONIALISM!





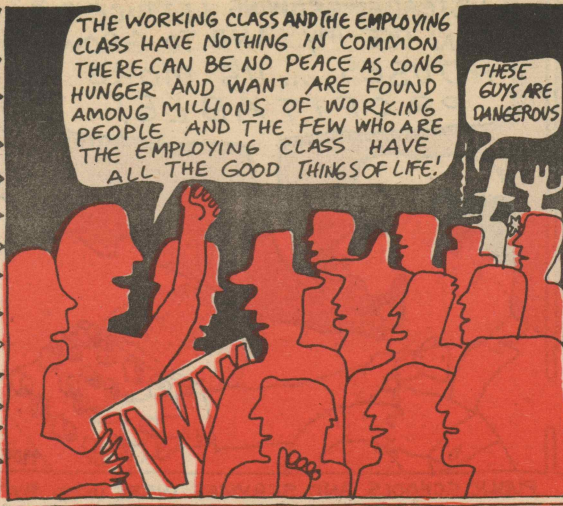


# CAPITALISM BEGAN TO FUNCTION AT FULL FORCE!

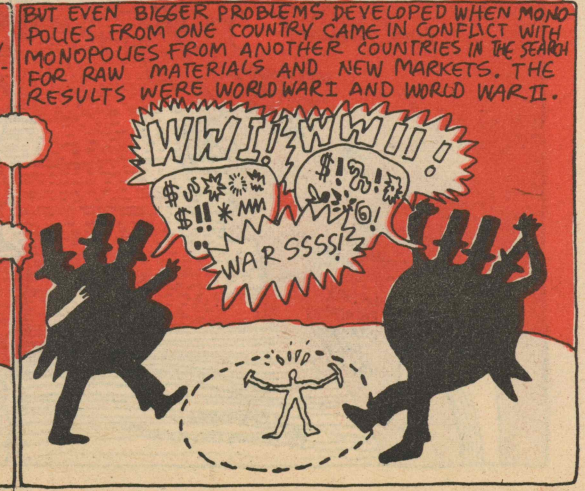
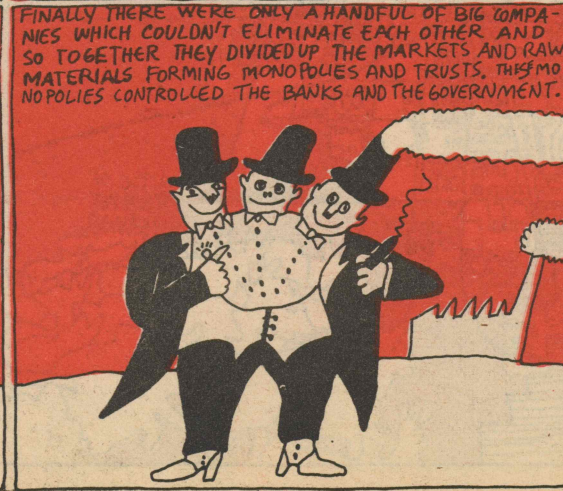
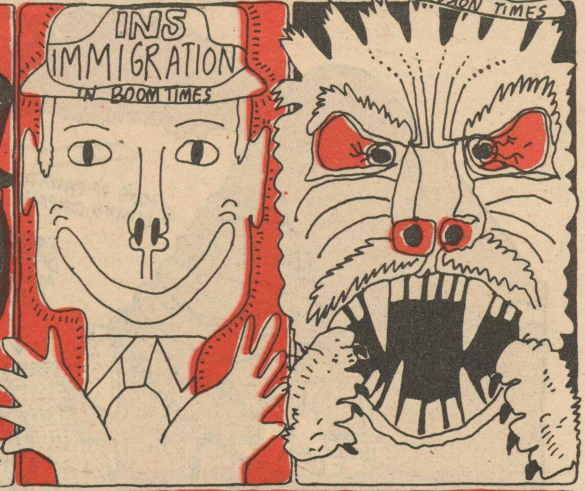
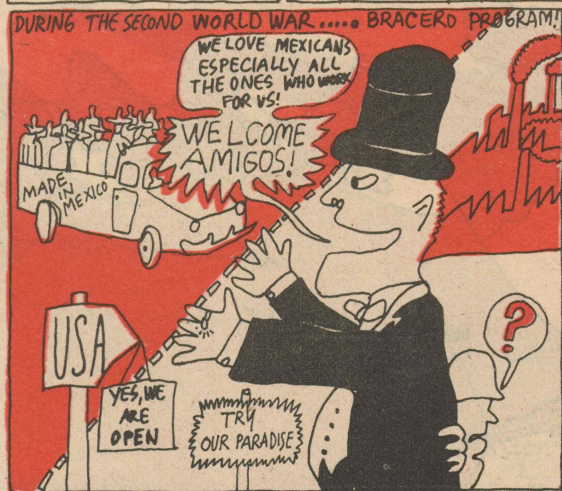
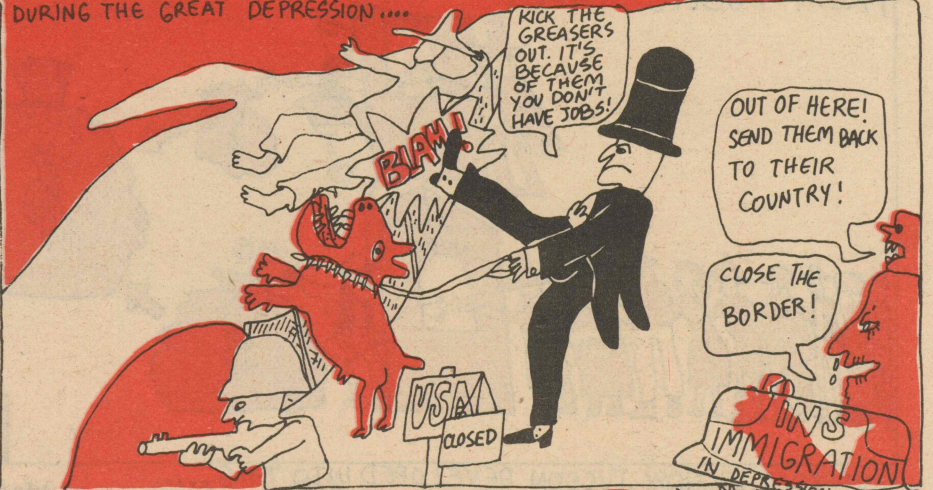
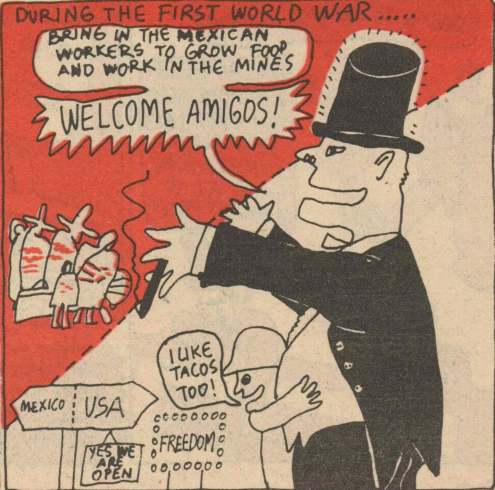
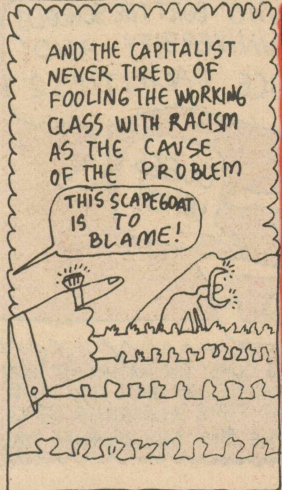
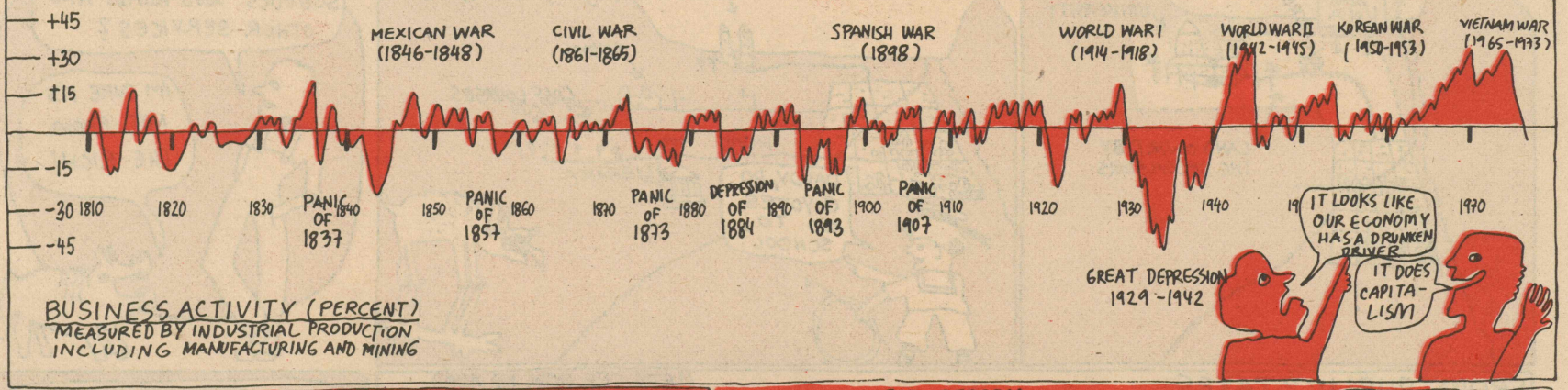




BUT THE THINGS WEREN'T AS SMOOTH AS THE LAST PAGE SHOWS. THE CAPITALIST HAD THEIR PROBLEMS. THE WORKERS GOT TIRED OF WORKING LONG HOURS UNDER HORRIBLE WORKING CONDITIONS. THEY WANTED AN EIGHT HOUR DAY AND BETTER WAGES. THE CAPITALIST REFUSED THESE DEMANDS AND THE WORKERS OFTEN WENT ON STRIKE, AS IN THE CASE OF THE CLIFTON-MORENCI STRIKE WHICH ENDED WITH THE INTERVENTION OF THE FEDERAL TROOPS. SOME GROUPS SUCH AS "THE WOBBLES" (IWW) WORKED TO UNITE THE WORKERS OF ALL RACES. IN THE BISBEE STRIKE THE CAPITALISTS FORCED ANGLO AND CHICANO WOBBLES INTO BOXCARS TO BE TAKEN OUT INTO THE DESERT AND LEFT THERE.



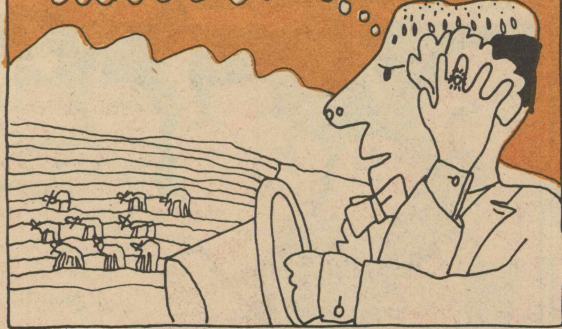
THE ANARCHY OF PRODUCTION, THE WILD RACE FOR PROFITS CREATED AN EXCESS OF PRODUCTS, WHICH THE WORKING CLASS COULD NOT AFFORD BECAUSE OF THEIR LOW WAGES. THIS LED TO ONE INDUSTRY'S BANKRUPTCY AFTER ANOTHER UNTIL RECESSIONS, PANICS, AND GREAT DEPRESSIONS CAME IN.....





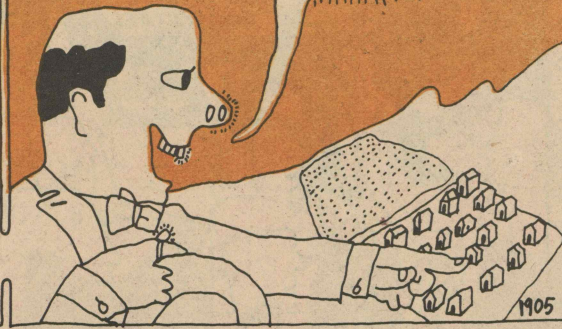
URBAN DEVELOPMENT IN ARIZONA WAS VERY SLOW. BETWEEN 1880 AND 1900, 90% OF ARIZONA'S POPULATION WAS RURAL.

IT'S PRETTY HARD WORKING FOR AN HONEST LIVING. I THINK I'LL GO INTO CITY LAND SPECULATION! MAYBE OPEN A BANK OR A REAL ESTATE COMPANY!



NOW WE UNDERSTAND!

INSTEAD OF GROWING LETTUCE I CAN USE MY LAND TO GROW HOUSES..... IT'S MORE PROFITABLE!

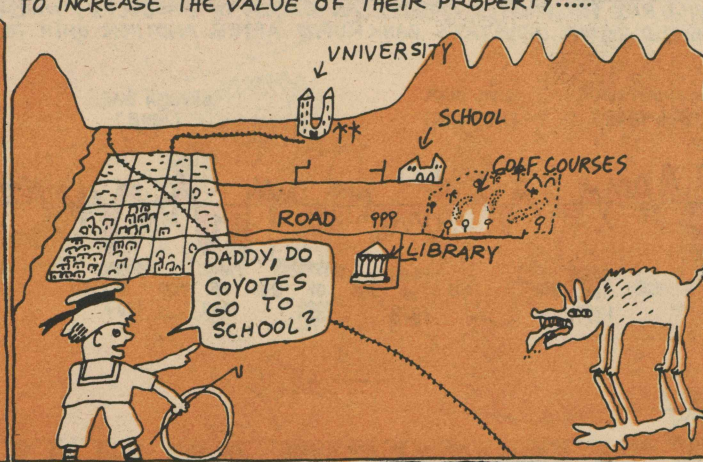
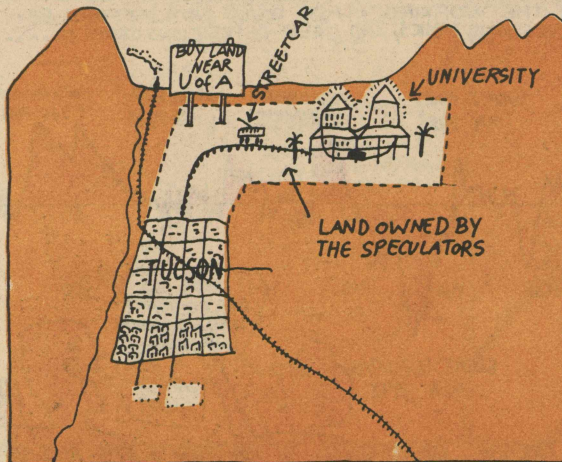
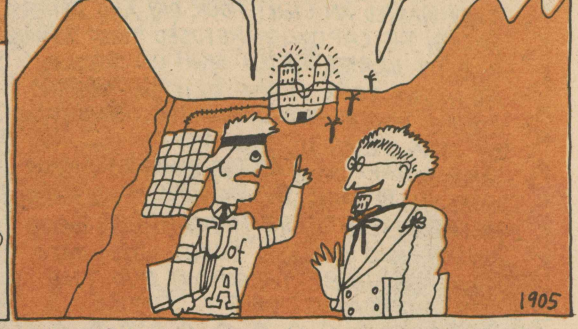


PUBLIC SCHOOLS AND SERVICES WERE USED BY THE SPECULATOR TO INCREASE THE VALUE OF THEIR PROPERTY.....

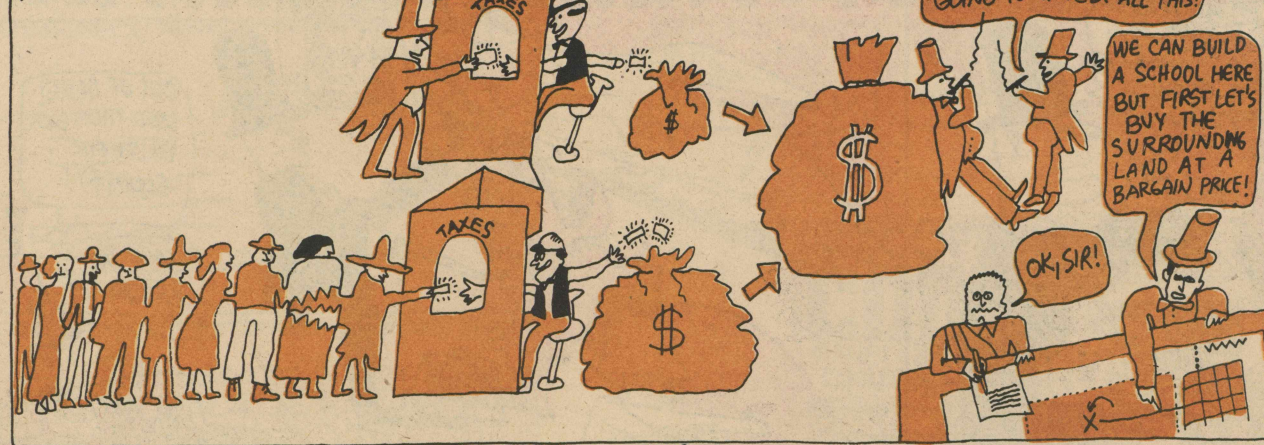
THE UNIVERSITY WAS AN EARLY EXAMPLE OF URBAN LAND SPECULATION

EXCUSE ME, PROFESSOR BUT, I CAN'T UNDERSTAND WHY THEY ARE BUILDING THE UNIVERSITY ON THE OUTSKIRTS?

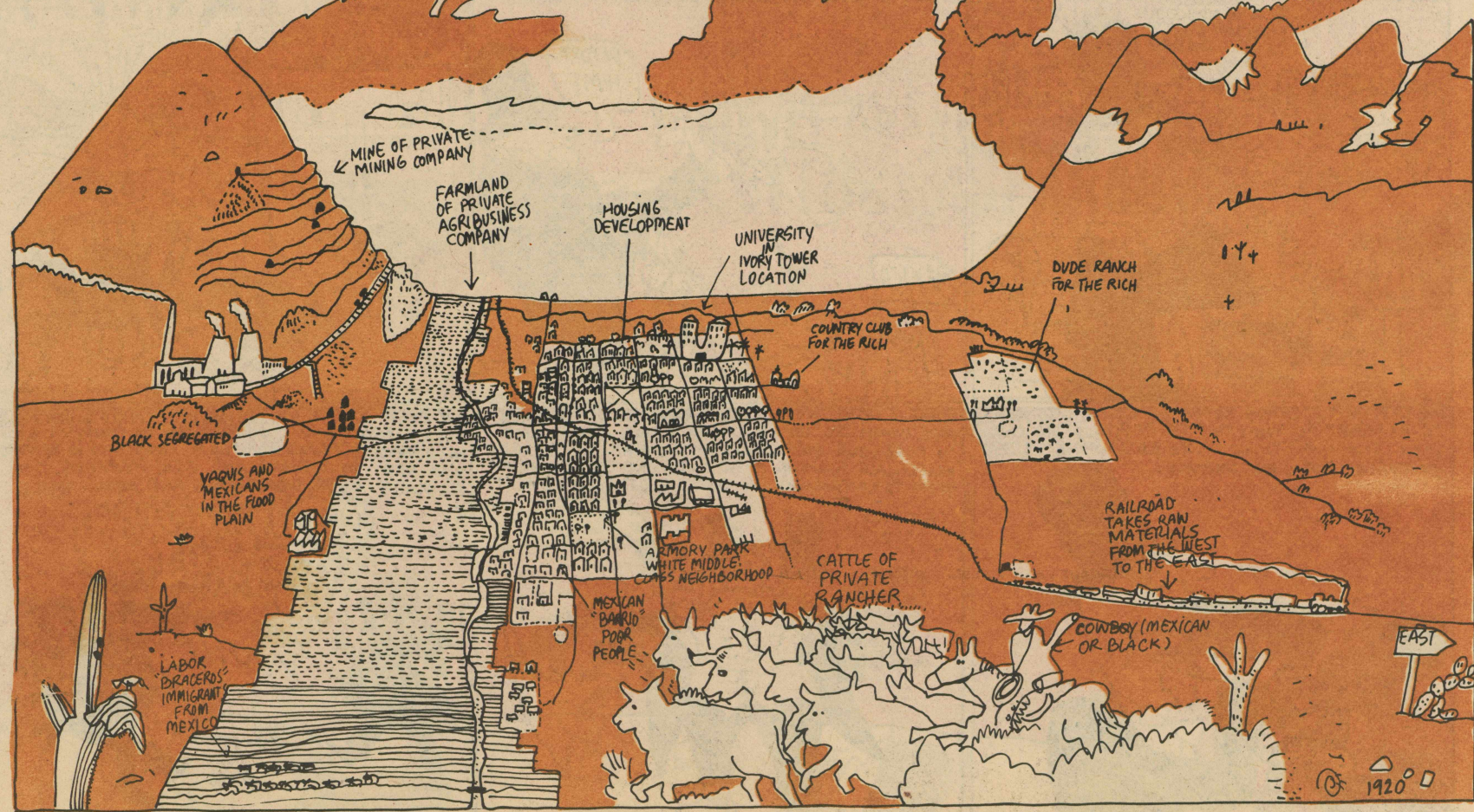
YOU MUST STUDY CAPITALISM A LITTLE BIT MORE TO UNDERSTAND THIS MY SON!



FROM "PUBLIC" TAXES



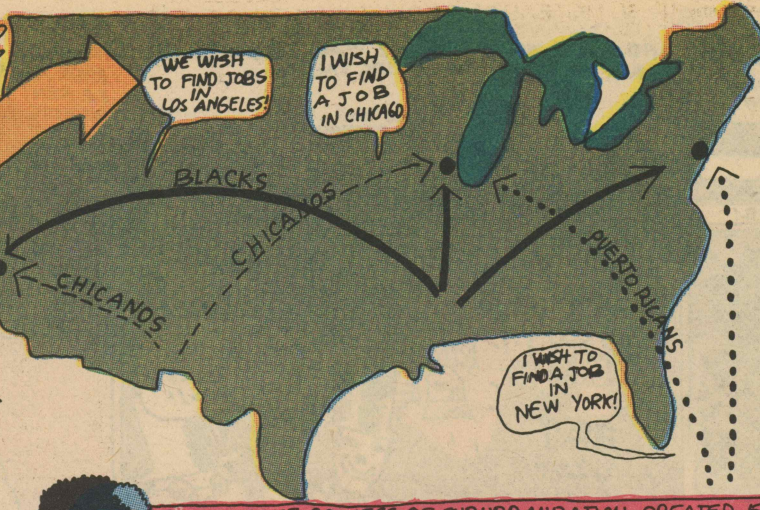
AND THAT IS HOW TUCSON DEVELOPED INTO THIS .....



1920

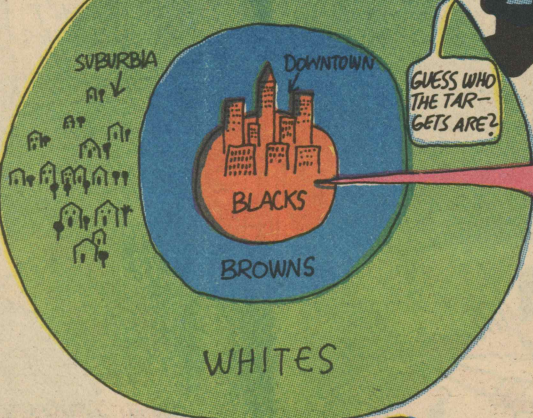


**FOLLOWING THE SECOND WORLD WAR**  
**SUBURBANIZATION OF AMERICAN CITIES AND THE GREAT MIGRATION TO TUCSON!**  
 DURING AND AFTER WORLD WAR II, MANY NON WHITES LEFT THE SOUTH TO TRY TO FIND JOBS IN THE INDUSTRIAL NORTHERN AND EASTERN CITIES. IN THE 1940'S AND 1950'S SEGREGATION WAS STILL THE LAW OF THE LAND, NON-WHITES COULD NOT LIVE IN WHITE NEIGHBORHOODS, ATTEND WHITE SCHOOLS, EAT AT WHITE RESTAURANTS ETC....

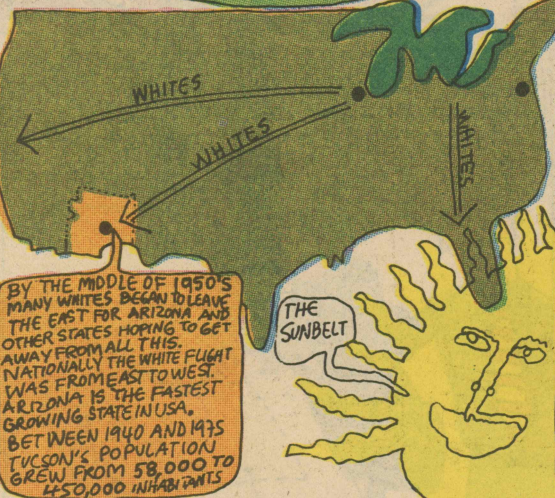
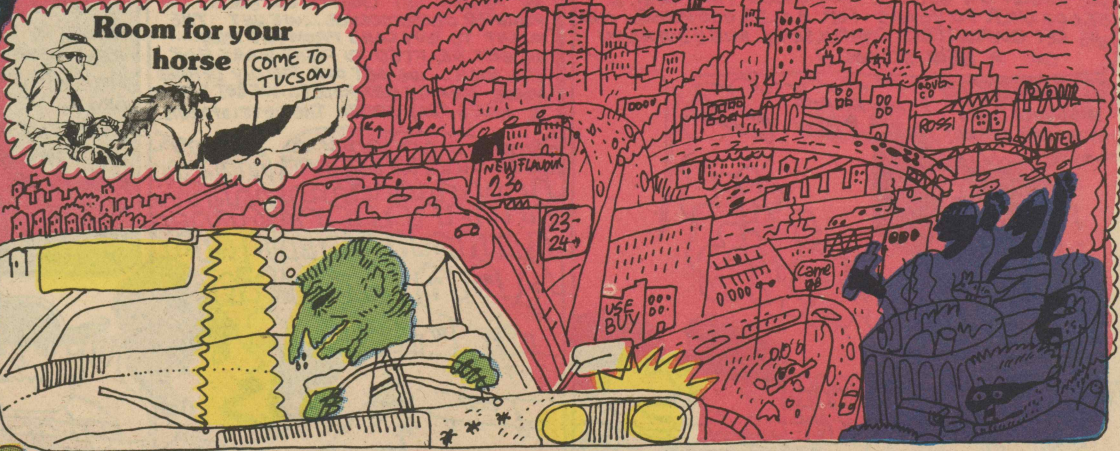


BIG BUSINESS WISHED TO EXPLOIT THIS CHEAP LABOR SOURCE. DURING THIS PERIOD THE CAPITALIST CORPORATIONS MADE ENORMOUS PROFITS OFF BOTH THE WHITE AND NON-WHITE WORKERS WHO WERE PITTED AGAINST EACH OTHER. THROUGH SUBURBIA THE CORPORATIONS HAD A MEANS OF EXTRACTING TREMENDOUS PROFITS WHILE FURTHER SEPARATING THE WHITES FROM THE NON-WHITES. THROUGH THE FHA AND OTHER GOVERNMENT AGENCIES WHITES WERE ENCOURAGED TO BUY "TICKY-TACKY" HOUSES IN SUBURBA LEAVING THE INNER CITIES TO DECAY INTO GHETTOS FOR THE MINORITIES.

OUR CITIES CAME TO RESEMBLE BULLSEYES FOR SHOOTING PRACTICE!

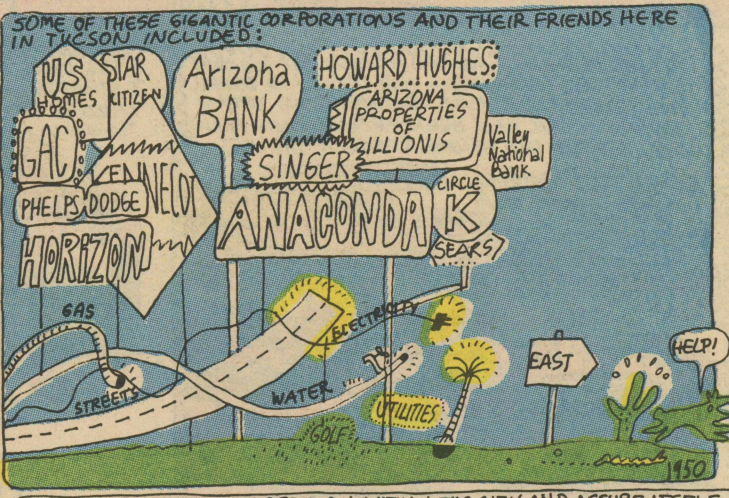


THE CAPITALIST PROCESS OF SUBURBANIZATION CREATED ENORMOUS POLLUTION, POVERTY, WASTE, AND HUMAN SUFFERING...



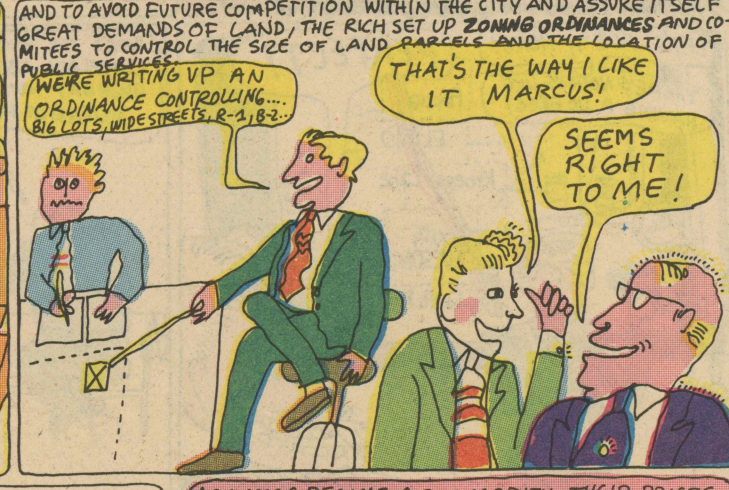
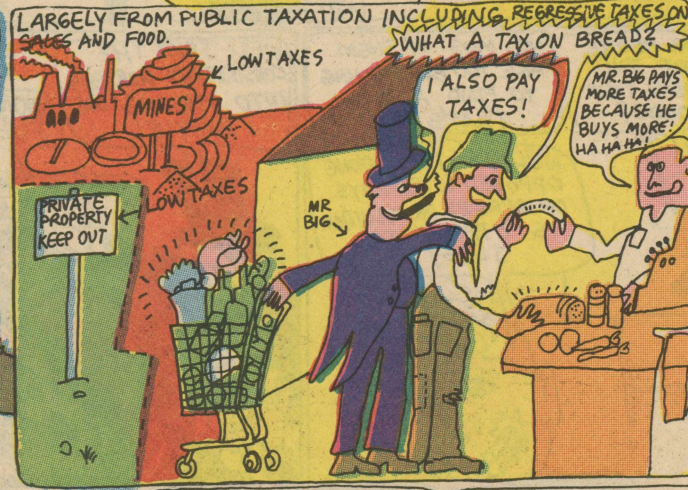
MANY OF THE SAME CORPORATIONS WHO HAD PRODUCED SUBURBIA AND POLLUTION IN THE EAST WERE ALSO IN THE WEST WAITING FOR THE NEWCOMERS TO EXPLOIT THEM. CORPORATIONS WHO WERE TRADITIONALLY ASSOCIATED WITH RAW MATERIALS, CHEMICALS, OIL AND DEFENSE BEGAN TO GET INVOLVED IN LAND AND HOUSING DEVELOPMENT TO REAP HUGE PROFITS.

**WELCOME AMIGOS**



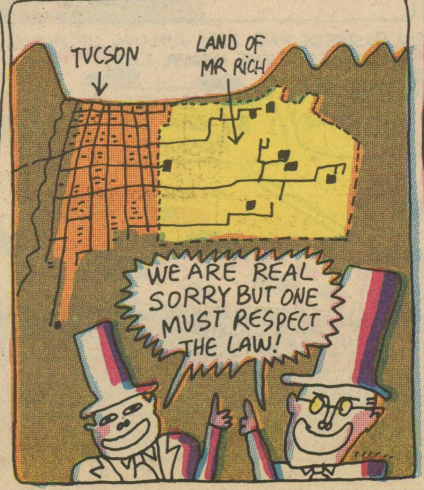
AND WHERE DOES THE CAPITALIST GET THE MONEY TO PAY FOR THE ROADS, SCHOOLS, GOLF COURSES, ETC.!

I DON'T KNOW!



WE'D LIKE A SMALL LITTLE LOT FOR A LITTLE ADOBE HOUSE THAT DOESN'T USE MUCH WATER OR ENERGY!

I'M SORRY IT'S AGAINST THE LAW. OUR ZONING ORDINANCE, BUILDING CODE, AND SET BACK REQUIREMENTS DON'T ALLOW IT. CAN I INTEREST YOU IN A 7000 SQUARE FOOT "R-1" LOT WITH OUR SPLIT LEVEL "CONQUISTADOR" MODEL - SOLID PLASTIC WITH AN AIR CONDITIONED FRONT YARD AND WATER FALL...



AS HOMES BECAME A COMMODITY THEIR PRICES INCREASED SO THAT ONLY RICH PEOPLE COULD AFFORD THEM. THE GOVERNMENT THROUGH FHA STARTED SUBSIDIZING MORTGAGES SO THAT THE MIDDLE INCOME PEOPLE WHO WERE IN THE MAJORITY IN TUCSON COULD AFFORD A HOME. FHA REQUIRED THAT ONE HAVE A STEADY JOB AND STABLE LIVING SITUATION, SO THAT ONE COULD WORK THE REST OF HIS LIFE TO PAY FOR HIS DREAM HOUSE; A SMALL HOUSE WITH A BACKYARD AND TWO CAR GARAGE.

HOME SWEET HOME

MORE CAPITAL AND TRANQUILITY!



BUT THE POOR AND MINORITIES.....

WE ARE HERE TO ASK FOR A LOAN TO PURCHASE A HOUSE, WE HAVE 6 CHILDREN AND ARE PRESENTLY RENTING!

WE'RE SORRY BUT WE CAN'T GUARANTEE A LOAN IN YOUR NEIGHBORHOOD!

MY WIFE WORKS!!

SORRY, THE HUSBAND MUST....

BUT, I CAN'T FIND A JOB!

SORRY, YOU CAN RENT FROM MR. RICH!

FACT: IN 1975, 75% OF ALL US FAMILIES COULD NOT AFFORD TO PURCHASE A MEDIUM-PRICED NEW HOME, IF THE CURRENT TRENDS HOLD, THE TYPICAL NEW ADORABLE HOME IN 1981 WILL SELL FOR \$38,000.

AND THUS WHITE MIDDLE CLASS SUBURBIA WAS BORN! COVERING THE ENTIRE VALLEY....

MIDDLE CLASS WHITE SUBURBIA

TUCSON

MINORITY RENTERS IN "BARRIOS"

WE ARE REAL SORRY BUT ONE MUST RESPECT THE LAWS!!

MEANWHILE IN THE OLDER PARTS OF THE CITY, WEST OF THE RIVER AND SOUTH OF TUCSON THE POOR AND MINORITIES HAD TO RENT HOUSING AT INFLATED RATES AND BUILD HOMES WITHOUT ADEQUATE SERVICES OR SECURITY.....

East Tucson

THE EAST SIDE IS RICHER IS IT OR ISN'T IT?

WE ANGLOS CAN GET 8 1/2% MORTGAGES THAT COST \$97,000 OVER 30 YEARS FOR A \$35,000 HOUSE... AND WE GET GUARANTEED COMPULSORY MISEDUCATION IN A NEW SCHOOL!!

WE MEXICANS GET MISEDUCATION IN AN OLD SCHOOL!

THE RAILROAD WAS BUILT BY MR. JOHNS

WHAT ABOUT THE WORKERS?

WE ANGLOS GET CRACKER BOX HOUSES AND PLANNED OBSOLESCENCE... WE GET THE RIGHT TO BUY LAND FROM THE RICH... WE GET DRAFTED TO FIGHT WARS FOR THE RICH... WE GET OUR RIGIDLY DEFINED MALE-FEMALE SEX ROLES... WE GET TO DRIVE 12 MILES/DAY THROUGH THE DEVELOPMENTS.

WE GET TO SHOP AT CONVENIENCE STORES OWNED BY THE RICH... WE GET TO READ NEWSPAPERS OWNED BY THE RICH: STAR CITIZEN: TWEEDEE DEE, TWEEDEE DUM... WE GET TO WATCH STUPID VIOLENT PROGRAMS AND DOCTORED NEWS ON TELEVISION STATIONS OWNED BY THE RICH... WE GET TO CHOOSE BETWEEN THE RICH CANDIDATE SELECTED BY THE DEMOCRATS AND THE RICH CANDIDATE SELECTED BY THE REPUBLICANS....

WELL, AT LEAST THERE AREN'T ANY NIGGERS OR SPICS IN OUR NEIGHBORHOODS!

IF YOU LIVE IN SUBURBIA YOU OWN A CAR AND IF YOU OWN A CAR YOU LIVE IN SUBURBIA AND THANKS TO GENERAL MOTORS, EXXON AND OTHERS THE AMERICAN DREAM OF HAVING A CAR HAS BEEN REALIZED AND PUBLIC TRANSPORTATION HAS BECOME A THING OF THE PAST.

BUY THE 1950 MODEL! TWO INCHES LONGER THAN LAST YEAR!

MINE IS FASTER!

MINE IS NOISIER!

MINE IS BRIGHTER!

YES BOY MINE IS FASTER!

WE WANT FREEWAYS TO SPEED!

WE WANT MORE PARKING LOTS!

NOW THAT WE ALL HAVE CARS WE DON'T HAVE ENOUGH ROADS!

AND THIS IS HOW THE CITY BECAME A NO-MAN'S LAND

THE CARS DEMAND WIDER STREETS AND MORE PARKING! TRAFFIC JAMS ARE A PROBLEM!

NO PROBLEM! THE SOLUTION IS FREEWAYS, EXPENSIVE FREEWAYS!

FLUNKY POLITICIAN

FLUNKY HIGHWAY EXPERT

1950

BE CAREFUL! DON'T YOU SEE WHERE YOU'RE CUTTING THE FREEWAYS? THROUGH THE RICH MAN'S PROPERTY!! @!?!\*NO!

EXCUSE ME, SIR!

LET'S PUT IT HERE! PERFECT!

THERE'S NOTHING LIKE HAVING A DEGREE!

Pascua

EL RIO

Kroeger Lane

South Tucson

South Park

WON'T THE POOR PEOPLE COMPLAIN ABOUT THE HIGHWAY RUINING THEIR NEIGHBORHOODS?

NO, MOST OF THEM ARE TOO BUSY TRYING TO FIND A JOB- THAT'S IT!

WE'LL SAY THAT ANYONE OPPOSED TO HIGHWAYS OR SPRAWL OR POLLUTION IS OPPOSED TO... JOBS!

WE'LL TRICK THE CONSTRUCTION WORKERS INTO FIGHTING OUR BATTLE!

WONDERFUL!!

CONSTRUCTION FEEDS MY FAMILY!

THE CITY CONTINUED TO GROW ALONG THE NEW ROADS. NEW BUSINESS AND JOBS SPRANG UP ALONG THESE ROADS, FURTHER AND FURTHER AWAY FROM THE POOR AND MINORITIES WHO WERE LEFT TRAPPED IN THE INNER CITY.

MARIA, TOMORROW I HAVE TO GO TO THE CLEANERS!

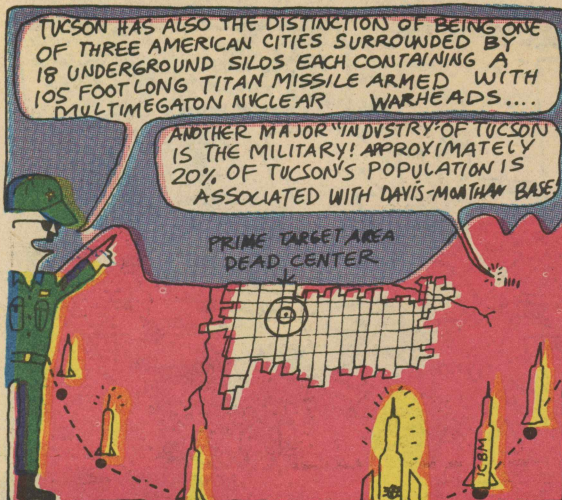
ARE YOU GOING BY CAR OR PLANE!

1950



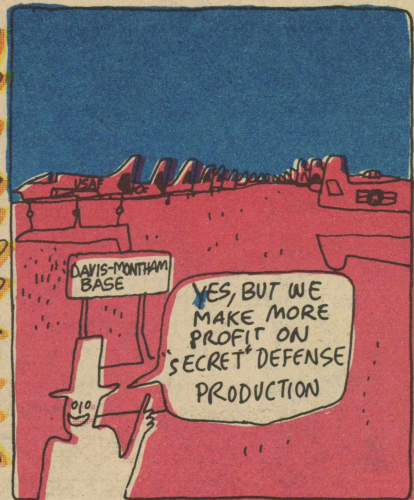




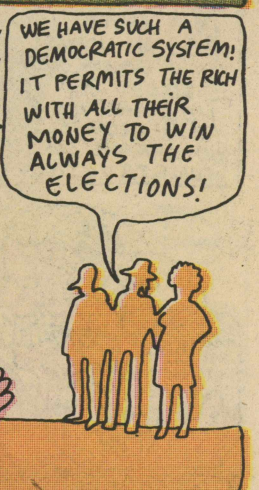
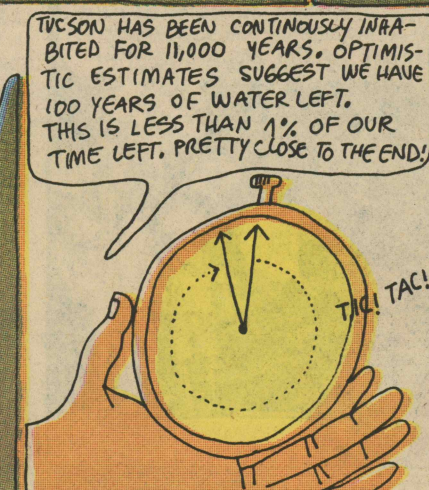
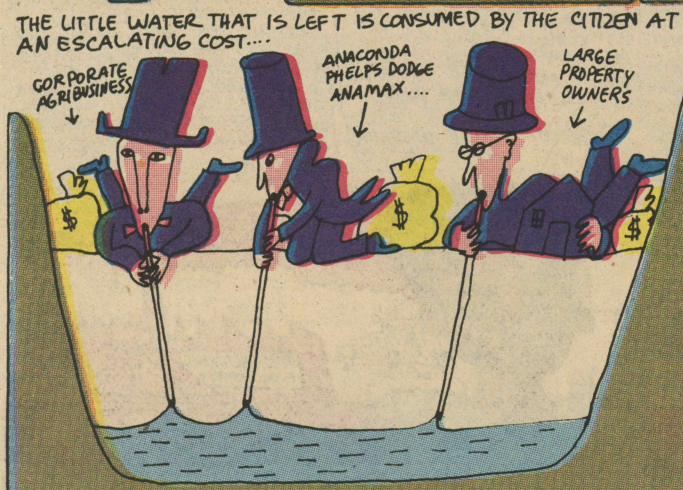
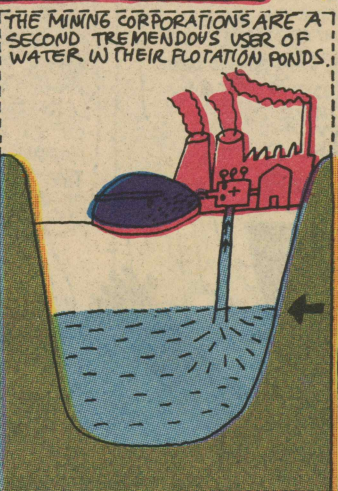
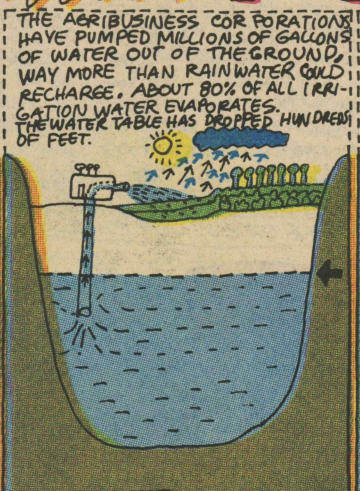
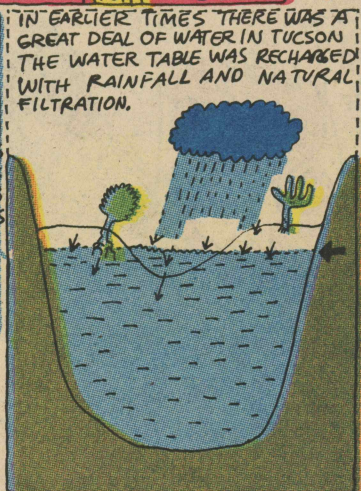


**FACT!!**

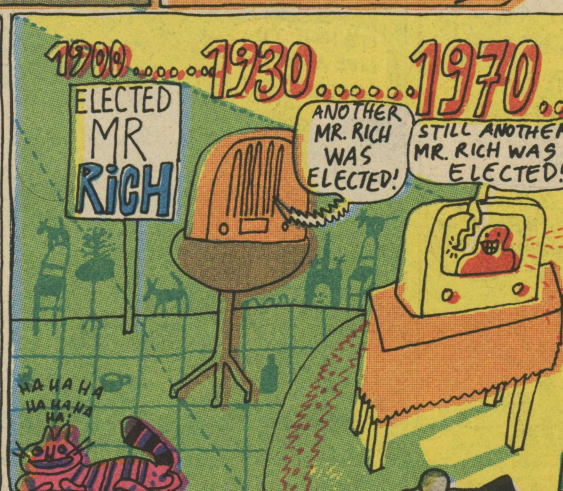
THE DEFENSE EXPENDITURE OF THE UNITED STATES IN THE PAST 25 YEARS WAS OVER 25 TRILLION DOLLARS. A SUM OF MONEY SUFFICIENT TO BUILD A HUNDRED MILLION NEW HOMES SUFFICIENT TO HOUSE 400 MILLION PEOPLE COMFORTABLY OR TWICE THE POPULATION OF THE U.S.A.



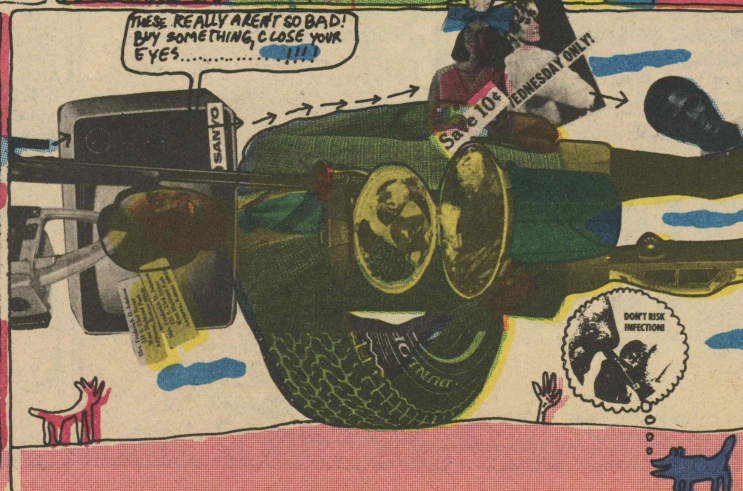
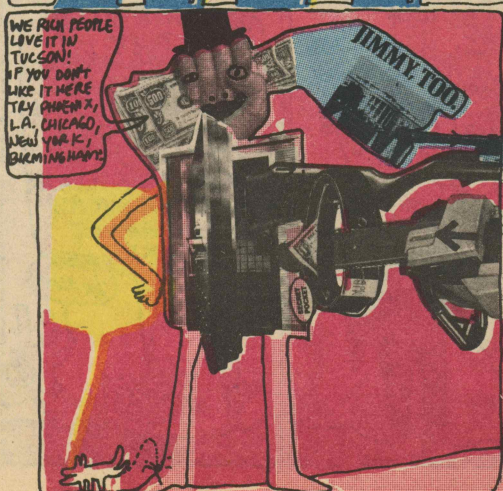
BY NOW, EVERYBODY HAS FORGOTTEN THAT THE GREAT CITY OF TUCSON LIES ON THE DESERT! WHERE THERE IS LITTLE WATER BUT HERE EVERYBODY THINKS THAT THEY ARE BACK EAST... THE FARMER WITH THEIR FARM PRODUCTS FOR EXPORTATION, THE MINES WITH THEIR LEACHING PONDS AND THE RESIDENTS WITH THEIR IMPORTED HOUSES AND LAWNS THAT CONSUME AN ENORMOUS AMOUNT OF WATER COSTING ENORMOUS AMOUNT OF MONEY...



TODAY TUCSON HAS ALL THE CHARACTERISTICS OF 20TH CENTURY MEDIOCRACY; BIG LUXURY CARS, THE BOOBTUBE, CENSORED NEWSPAPERS, BOREDOM, WORTHLESS LABOR SAVING DEVICES, PLASTICS, SYNTHETIC FOODS, ALIENATED SOCIETY NO COMMUNICATION AND.... DEMOCRATIC CHOICES BETWEEN:



WHY DO WE ALWAYS GET THE SAME CHOICES AND NO REAL CHANGE? WELL, THE PAPERS TELL US WHO TO VOTE FOR! WHO OWNS THE PAPERS? THE RICH PEOPLE! WELL THE DEMOCRAT AND REPUBLICAN PARTIES TELL US WHO TO VOTE FOR? WHO CONTRIBUTES TO THE PARTIES? THE RICH! WELL THE UNIVERSITY SCHOOLS TELL US WHO TO VOTE FOR? WHO RUNS THE UNIVERSITY? THE RICH! WELL THE NEWS WOULD TELL US IF THINGS WEREN'T FAIR? WHO OWNS THE NEWS, TELEVISION, RADIO? THE RICH! PEOPLE LIKE THE RICH! AND THEY THINK THEY'RE FREE!





THE END!

WHAT IS BEING PLANNED BY THE  
DEVELOPERS, THE CAPITALISTS  
AND THE BIG BUSINESSES  
FOR TUCSON!!



YEARS INHABITANTS URBAN GROWTH

IMPORTANT EVENTS

ECONOMIC, POLITICAL AND URBAN DEVELOPMENT

ARCHITECTURE: HOUSING PUBLIC BUILDINGS

300  
0

1400

1750

1800

1850

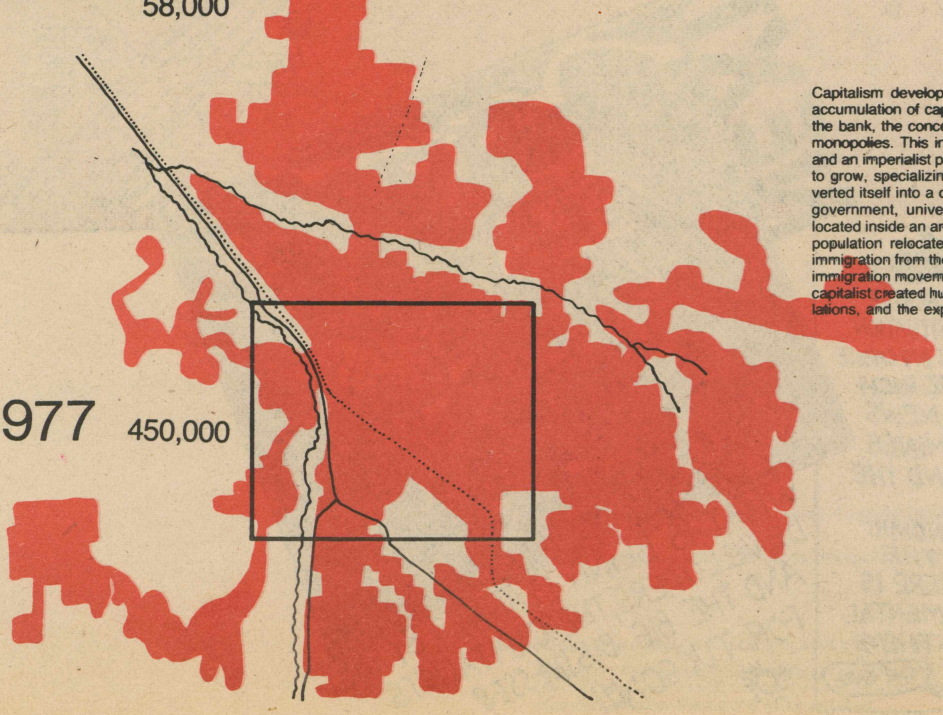
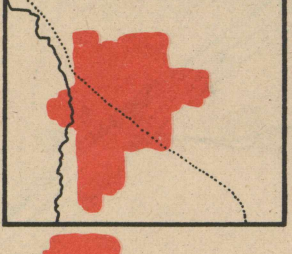
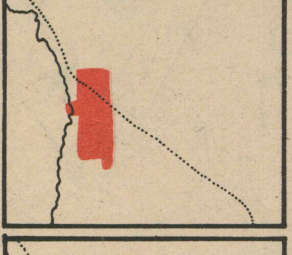
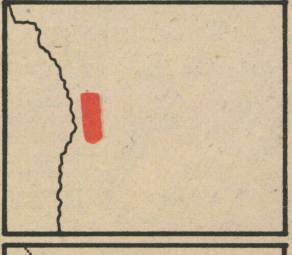
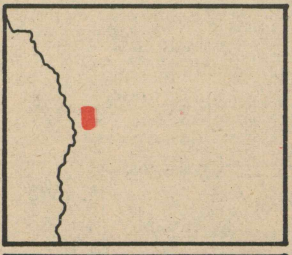
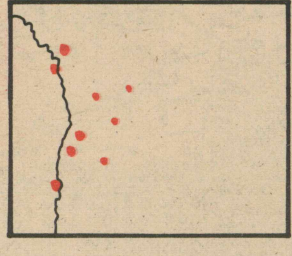
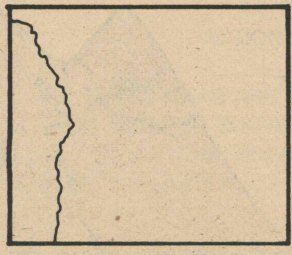
1900

1950

1977

70  
300  
5,000  
10,000  
15,000  
32,000  
58,000

450,000



4000 Cochise Tradition  
300 Hohokam Culture (Beginning)  
500 Hodges Site  
1000 Discovery of etching  
1300 Hohokam Culture (End)  
1400 Pimas and Papagos

1540 First Spanish "Conquistadores" in Arizona (Fray Marcos de Niza, Coronado, Estevan)  
1691 Kino Missions in "Pimeria Alta"  
1751 Pima Rebellion

1770 Peak of Apache attacks  
1770 Peak of Apache attacks  
1775 Foundation of San Agustín  
1797 San Xavier del Bac completed

1821 Mexican Independence

1845 Mexican American War  
1848 Guadalupe-Hidalgo Treaty  
1853 Gadsden Purchase

1866 Civil War  
1872 Apache War  
1880 Southern Pacific Railroad in Tucson

1910 Peak Mexican Immigration  
1915 Clifton-Morenci strike  
1917 World War I  
1920 Yaquis come to Tucson  
1930 Great Depression  
1945 World War II ends  
1950 White Immigration to Tucson

HOHOKAM

The Hohokam Indians lived basically on agriculture. Their level of development in agriculture was relatively high (i.e. irrigation canals). The ownership of the land was collective. Everyone worked the fields and between everyone they divided the products. The only division of labor that existed was between the man and the woman; classes did not exist. The social and religious organization was the tribe. The settlements were formed of small clusters of huts (pit-houses) dispersed among the tribal territory and located near the rivers. Structures for natural cults were located between the scattered dwellings; temples and oval ball courts.

SPANISH

The Spaniards introduced private ownership of the land, which was divided between the Church (missions) and the landowners (haciendas). The Indians were forced to work for the landowners, mines and cattle ranches. The majority of goods was produced for the market in Spain (mostly precious metals) and the rest was used for local consumption. As a result of the new division of labor (agriculture, handicrafts, merchants), the society was divided into three classes: farmers (indians), artisans and merchants or social and political organization (The Spanish colonial Empire) necessitated the institution of a public force (the Army) to maintain order and an ideological institution (the Church). These were financed by tributes and taxes (Bureaucracy). The urban political strategy was to relocate the indigenous population around the centers of production, in missions, "pueblos" with churches, and forts ("presidios").

MEXICANS

During this period the productive system didn't change. The only changes were political ones: Republic of Mexico; ownership of land transferred to the bourgeois Creole; and loss of the Church's influence, ideological and material.

NORTH AMERICANS

With the coming of the Anglos this territory began to participate in the capitalist production system. Farms, mines, and cattle ranches became property of the Anglo-capitalist, used for the production of minerals, cattle, and agricultural products which were transported by train to markets in the industrial Northeast. The autonomous Indian population was massacred. Mexicans became part of the labor force (the proletariat). The working class grew in numbers with the arrival of Anglo and Mexican immigrants. The result was the division of society into two classes: a minority of white capitalist owners of the means of production and a majority of workers, mostly Mexicans. To avoid a conflict between these two antagonistic classes the bourgeois-democratic state established a standing army, police, a judicial system and an ideological apparatus (education), all financed through taxes. The cities continued growing around the old and new centers of production, gradually forming a division within the city between classes and races. Each sector was differentiated by the design of the buildings (housing) and by the unequal provision of social services (schools, hospitals, etc.).

Capitalism developed enormously by means of a continuous accumulation of capital, the influence of the finance capital and the bank, the concentration of corporations and the creation of monopolies. This in turn created a network of communications and an imperialist political policy. Territories and cities continued to grow, specializing according to the production. Tucson converted itself into a city dedicated principally to services (offices, government, university, hospitals, Air Force base, etc.) and located inside an area of abundant mineral production. The rural population relocated to the city, and there was a continuous immigration from the industrial cities of the Northeast. These two immigration movements caused an irregular growth pattern. The capitalist created huge profits by the control of land, zoning regulations, and the exploitation of real estate business (suburbia).

